

JUKI

LOWEST COST OF OWNERSHIP

High-Speed Compact Modular Mounter

RX-7

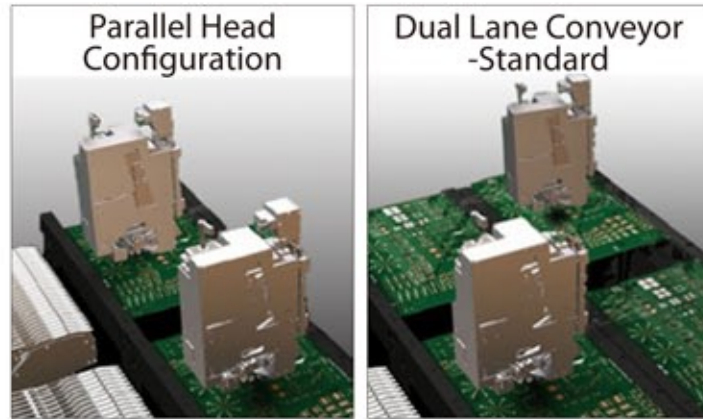
Unrivaled Productivity in a Compact Footprint with Advanced High Speed and High Accuracy, makes the RX-7 the most efficient Modular Chip-Shooter available today!



The next generation high density modular chip-shooter featuring unrivaled productivity in a compact footprint!

Super-High Productivity

The RX-7 has three key features for efficient production: Super Rotary Head, Parallel Placement Heads, and Dual Lane Conveyor



Super Slim Design

At only 988mm wide and with a placement speed of 49,000 CPH (IPC9850), the RX-7 provides excellent placement per square foot!



Rated
49,000 CPH
(IPC9850)



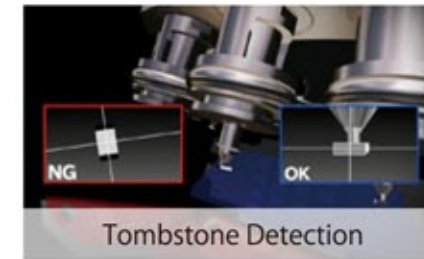
High-Speed Compact Modular Mounter

RX-7

Placement Speed: 49,000 CPH (IPC9850)
Component Size: 0402 (01005) ~ 5mm

High Quality

The head-mounted centering camera can also detect tombstones, component presence/absence, and upside down components. Small components are placed accurately and reliably.



Complete Line Solution

Whether it is high-volume or high-mix production that is required, Juki has the solution for you. Juki offers a complete range of SMT manufacturing line solutions designed to improve efficiency, quality and reliability that will improve yields and maximize profit.



Solder Paste Printer

PWB Visual Inspection Machine(SPI)

High-Speed Compact Modular Mounter

High-Speed Compact Modular Mounter

High-Speed Compact Modular Mounter

PWB Visual Inspection Machine(AOI)

RP-1

RV-1

RX-7

RX-7

RX-6

RV-1

Specification

| Item | | Model | High-Speed Compact Modular Mounter RX-7 |
|--------------------------------|----------------------|-------|---|
| Board size | Single lane conveyor | | 50 × 50 ~ 360 × 450mm |
| | Dual lane conveyor | | 50 × 50 ~ 360 × 250mm |
| Component height | | | 3mm |
| Component size | | | 0402 (01005) ~ 5mm |
| Placement speed | Chip | | 49,000 CPH (IPC9850) |
| Placement accuracy | | | ±0.04mm (Cpk ≥ 1) |
| Feeder capacity | | | Max. 76 using dual lane 8mm tape |
| Power supply | | | AC 200-415V, 3-phase |
| Apparent power | | | 3.3 kVA |
| Operating air pressure | | | 0.5 ± 0.05MPa |
| Air consumption (standard) | | | 20L/min (during normal operation) |
| Machine dimensions (W x D x H) | | | 998 × 1,895 × 1,530mm |
| Mass (approximately) | | | 1,950kg |

Options

| | |
|--------------------------------|--|
| Software | IS / IFS-NX |
| Component handling and feeders | Feeder Trolley / Electric tape feeder / Tape reel mounting base / Feeder trolley Feeder stocker / Splicing jig / Feeder Calibration Jig with Monitor / Electric Trolley Power Station |

※Please refer to the product specifications for details.



JUKI CORPORATION HEAD OFFICE

An environmental management system to promote and conduct the following:
 (1) Eco-friendly development of products and technologies
 (2) Green procurement and green purchasing
 (3) Energy conservation (reduction in carbon-dioxide emissions)
 (4) Resource saving (reduction of papers purchased, etc.)
 (5) Reduction and recycling of waste
 in the activities of research, development, design, sales, distribution, and maintenance services of industrial sewing machines and industrial robots, etc., including sales and maintenance services of data entry systems.



JUKI®

MANUFACTURER: JUKI CORPORATION
 INQUIRY: JUKI AUTOMATION SYSTEMS CORPORATION
 2-11-1, Tsurumaki, Tama-shi, Tokyo 206-8551, JAPAN
 TEL.81-42-357-2293 FAX.81-42-357-2285

<http://www.juki.co.jp>

North America Headquarters:

Juki Automation Systems
 507 Airport Blvd.
 Morrisville, NC 27560
 Phone: 919-460-0111
 Email: sales@jas-smt.com
www.jukiamericas.com

North America Sales Office:

Juki Automation Systems
 47102 Mission Falls Court
 Suite 101
 Fremont, CA 94539
 Phone: 510-249-6700