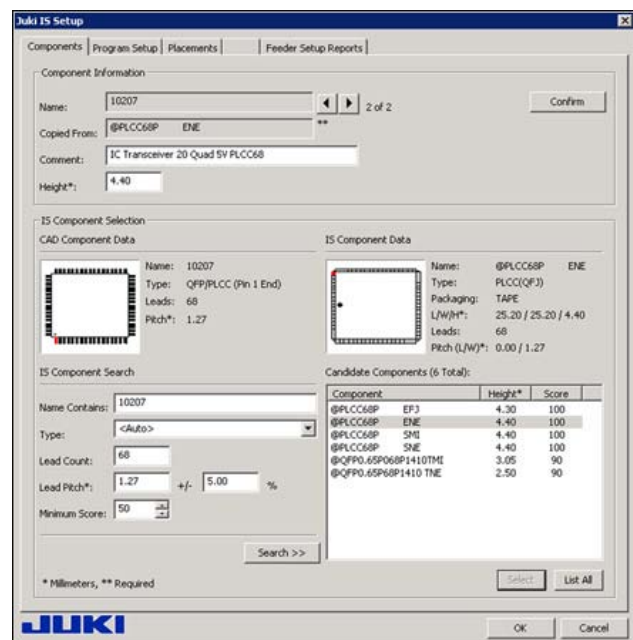
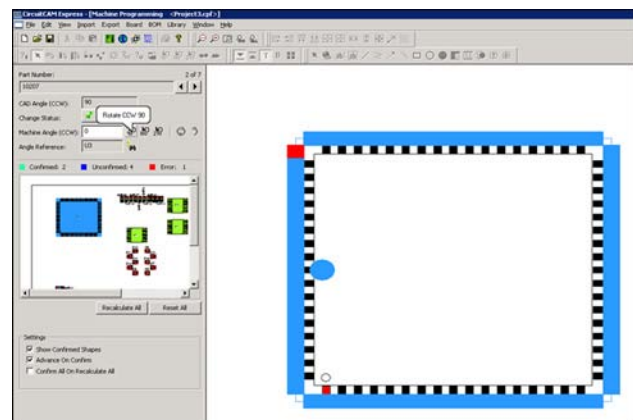


JUKI's revolutionary world class line level management and optimization software now includes Aegis Software's CircuitCAM Express, which allows users to perfect CAD and BOM data before generating a program. The seamless integration allows direct library management access, machine programming and optimization features within JUKI IS.

Powered by:  
**AEGIS**  
SOFTWARE  
www.aiscorp.com

## JUKI IS NPI Plus Features

- Automatically add new part numbers to the database in a single click.
- Adjust board origin, rotate data and panelize.
- Convert CAD, Gerber, ASCII or centroid data to JUKI format in seconds.
- Eliminate human errors and dramatically increase efficiency vs. manual teaching.
- Machine angle verification layer wizard confirms each package selection's final placement angle automatically.
- Feeder Setup Report allows the operator to see how the part should be oriented in the feeder.
- Easy upgrade to full CircuitCAM supporting full production line, visual aids and more.



# JUKI IS NPI Plus Programming Experience

FUNCTION	PRIMARY PLATFORM
<b>Raw File Interception (Data Preparation)</b>	
Import CAD / Digitize Gerber	◀
Import BOM	◀
Merge BOM / CAD	◀
<b>Board / Panel Definition</b>	
Step-and-Repeat	◀
Define Fiducials	◀
Component Assignment	◀
Set Origin	◀
Rotate Panel / Board	◀
<b>Machine Library Support</b>	
Relate New Part Numbers to IS Components	◀
Create New Components	▶
Edit Components	▶
Relate Fiducials to JUKI IS Fiducial Shapes	▶
<b>Placement Angle and Shape Troubleshooting</b>	
Automated Placement Angle Calculation	◀
Visually Confirm Shape Geometry and Orientation	◀
Placement Data Transfer from Aegis	IIS File
<b>Line Balancing and Optimization</b>	
Distribute Components Across Machines in Line	▶
Optimize Feeder Setup	▶
Generate Placement Sequence	▶
Generate Machine Programs	▶
Feeder Setup Report with "As Loaded" Graphic	◀
<b>Recipe / Program Transmission</b>	
Transmit Program to Machines	▶
<b>Upgrade to Full CircuitCAM</b>	
Non-JUKI Placement Machine Programming	◀
Offline Stencil Printer Programming	◀
Offline AOI Programming	◀

# Supported CAD Types

Gerber Data
Accel EDA , Accel Tango, & Accel PCAD
Cadence Allegro via Aegis Script
DIF, PADS DFT Audit, and C-Link
EE Designer III ASCII File
Fabmaster FATF
GenCAD v. 1.4
INCASESTL CAD File
Intergraph Veribest GenCAD
IPC-D-356
Mentor Graphics Neutral File
OrCAD
PADS PowerPCB, PADS Perform
Panapro PCB
Pantheon PDB File
P-CAD PDIF Design File
P-CAD for DOS
Protel 98/99 ASCII PCB File
SCI Cards Neutral File
Supermax CAD
Tango for DOS
Tecnomatix-Unicam PDW
Ultiboard
Valor ODB++ XML
Zuken Visula and Cadstar

JUKI Automation Systems, 507 Airport Blvd. Morrisville, NC 27560

Phone: 919-460-0111 ▪ Email: [info@jas-smt.com](mailto:info@jas-smt.com) ▪ Web: [www.jas-smt.com](http://www.jas-smt.com)