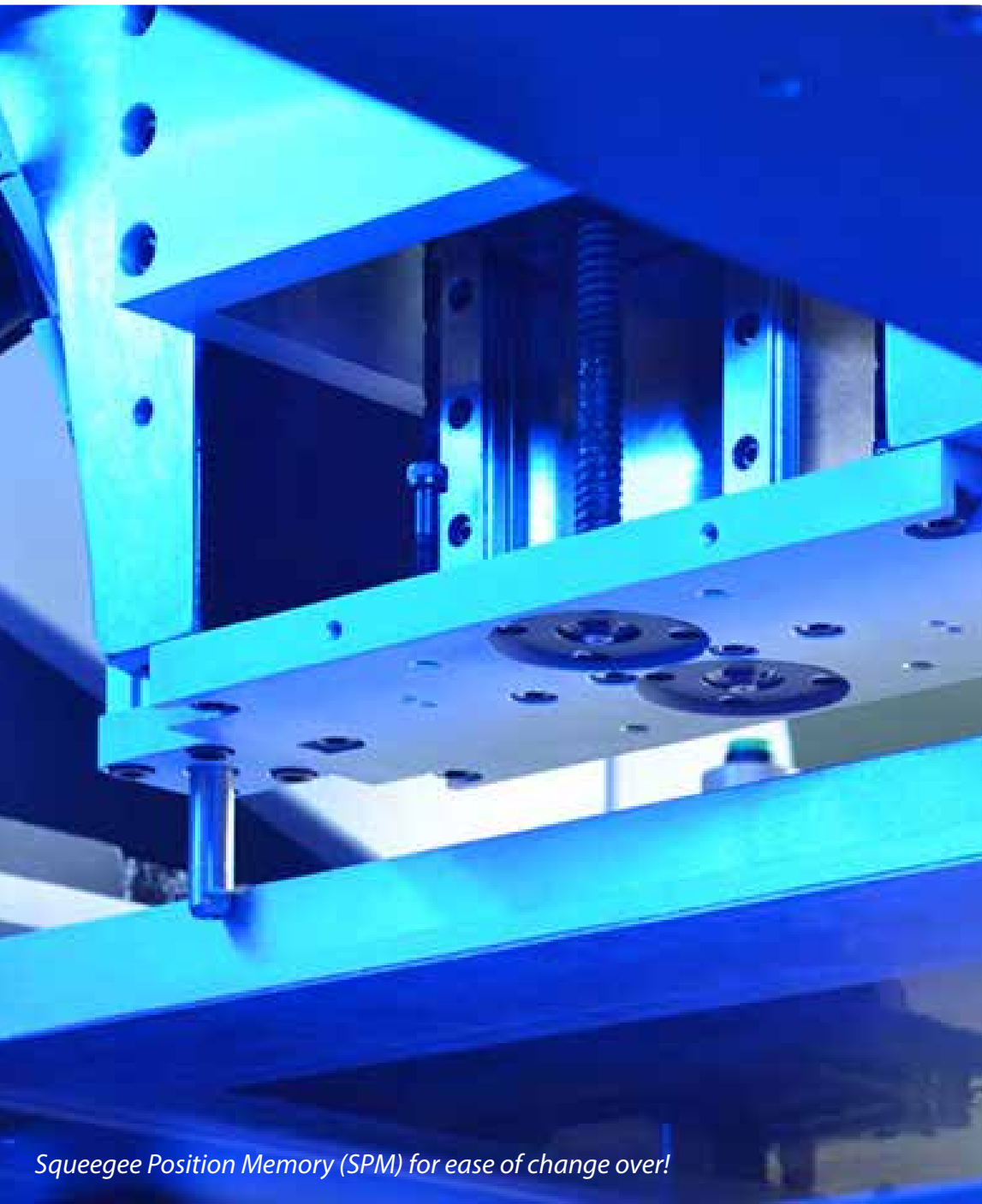
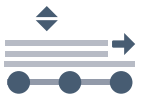
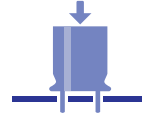
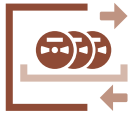


# PMAXII

**JUKI**

JUKISmart Solutions

Perfect for long LED PCBs  
*Print up to 1,220mm x 800mm*



*Squeegie Position Memory (SPM) for ease of change over!*

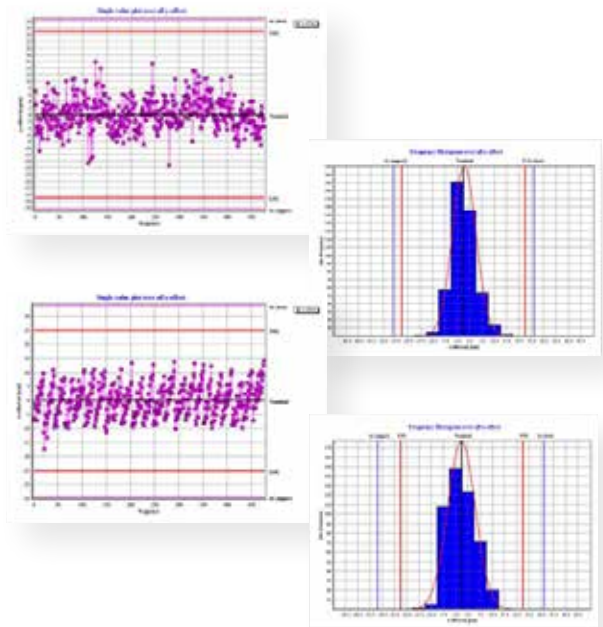
## Large Format Fully Automatic Screen Printer.

The PMAXII printers utilize a patented mathematical calculating algorithm to ensure the machine's high accuracy print alignment that easily achieves 01005 (0402 metric) printing.



### Feature 1: Precision

The PMAX-II printers utilize a patented mathematical calculating algorithm to ensure the machine's high accuracy print alignment that easily achieves 0201 (0603 metric) printing.



### Feature 2: Motorized Front and Rear Squeegees

Designed to meet the need of different pressures on the front and rear squeegees, each can be programmed independently while the functionality of self leveling prevents solder paste leakage. Various snap-off modes can also be selected to accommodate all types of PCB's and paste.

### Feature 3: Patented PCB "Flexible Auto Clamp" (FAC) System

The conveyor system includes a built in PCB snigger (side clamp) and top clamp system. Changing between each requires no change of hardware and is controlled by a simple mouse click.

*Highly Accurate*  
Achieves +/- 0.0125 at 6 Sigma accuracy

### Feature 4: Wiper System

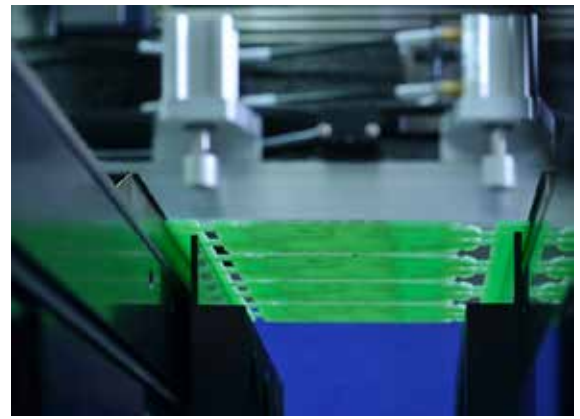
The stencil cleaning has 3 modes: Wet, Dry, Vacuum. Each mode can be programmed individually or combined in any way. If auto cleaning is not necessary, the system allows manual cleaning within its operation menu, which shortens cleaning time and improves production efficiency.



*Simple quick adjustment for various stencil sizes*

## Feature 5: 2D Solder Paste Inspection System

The 2D paste inspection system can detect excessive/insufficient, presence/absence, and bridging.



Top & Side clamping Flexible Auto Clamping System

## Feature 6: Automatic PCB Thickness Control

Uses linear motor drives to perform the dynamic adjustment of the lift table. This superfine motion and lock mechanism maintains higher precision during the printing process.

## Feature 7: Lift Table

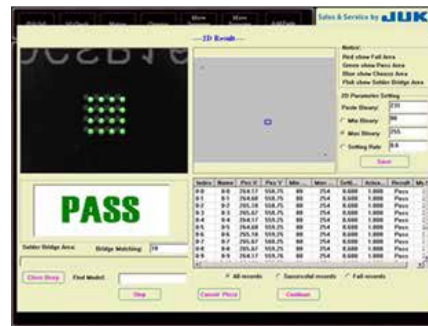
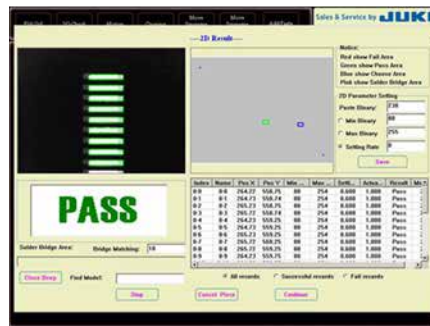
Solid Cast Lift Table designed to meet the rigors and demands of a 7x24 manufacturing environment.



Heavy duty cast steel frame

## Available Options

- TUV/UL Certification
- Stencil inspection function
- Closed loop feed back with SPI systems
- APD (automatic paste replenish) system
- Magna Print squeegee blades
- Larger FOV camera (21mm x 16mm)
- Automated underside PCB support



2D Paste Inspection Excessive, Insufficient, & Bridge Detection



Programmable, Flexible stencil cleaning system: bottom side, wet, dry vacuum

## Specification

### Performance

Machine Alignment capability	+/-25 microns
Core Cycle Time	< 25 secs (Excluding printing & cleaning)
Product Changeover time	5 mins
New Product Setup Time	10 mins

### Board Handling

Maximum Size (L x W)	1220 mm x 800 mm
Minimum Size (L x W)	100 mm x 65 mm
Thickness	0.4 mm to 10 mm
PCB Thickness Adjustment	Auto leveling
PCB Support Methods	Magnetic pins, support blocks, auto table adjustment
PCB Clamping Methods	Retractable top clamp & motor controlled side clamp
PCB Max. Weight	10 kg
PCB Edge Clearance	3.5 mm
PCB Bottom Clearance	23 mm
PCB Warpage	Max. 1% diagonally
Conveyor Direction	L > R, R > L, R > R, L > L (Software controlled)
Conveyor Height	Standard is 900mm +/-20mm (If need any higher need to include footage support)
Conveyor Speed	Max. 1500 mm/sec
Conveyor Width Adjustment	Auto

### Printing Parameters

Stencil Frame Size (L x W)	Adjustable, 737 mm x 737 mm to 1500 mm x 1250 mm
Print Head	Arc shape beam with 2 independent double linear guide motorized heads

### Print Mode

Printing Table	Single / Double (Software select)
Adjustment Range	X: ±20 mm; Y: ±20 mm; O: ±2°
Squeegee Size	Metal: Two pair = 850mm & 1,250mm
Squeegee Pressure	0 - 30 kgs (Programmable)
Squeegee Speed	5 - 150 mm/sec
Squeegee Angle	Std. 60°, Option 45°, 50°, 55°
Cleaning System	Auto wet/dry/vacuum combination (User edit)

### Optical System

Vision Method	Single camera simultaneously Look Up/Look Down
Field of View (FOV)	8 mm x 6 mm
Fiducial Type	Circle, triangle, square, diamond, cross
Fiducial Size	0.5 ~ 4.0 mm
20 Inspection	100 windows to inspect missing, insufficient (Std.)

### Operator Interface

Hardware	LCD Monitor, Mouse & keyboard
Operating System (OS)	Window 10 or higher
Control Method	Industrial PC controlled
I/O Interface	SMEMA Standard

### Facilities Requirement

Power Supply	AC 220 V ±10%, 50/60 Hz, single phase
Air Supply	4 ~ 6 kgf/cm <sup>2</sup>
Power Consumption	3 KW
Dimension (Exclude signal lamp)	2020 (W) x 1740 (D) x 1524 (H) mm
Machine Weight	Approximately 1800 kg



**JUKI CORPORATION HEAD OFFICE**  
The activities of research, development, design, sales, distribution, and maintenance services of industrial sewing machines, household sewing machines and industrial robots, etc., including sales and maintenance services of data entry systems.

\*Please refer to the product specifications for details.  
■ JUKI Specifications and appearance may be changed without notice.

#### Juki Americas Headquarters

5151 McCrimmon Parkway, Suite 200  
Morrisville, NC 27560  
Phone: 919-460-0111  
Fax: 919-469-0480

#### California Office

412 Kato Terrace  
Fremont, CA 94539  
Phone: 510-249-6700  
Fax: 510-249-6710

# JUKI

[www.jukiamericas.com](http://www.jukiamericas.com)